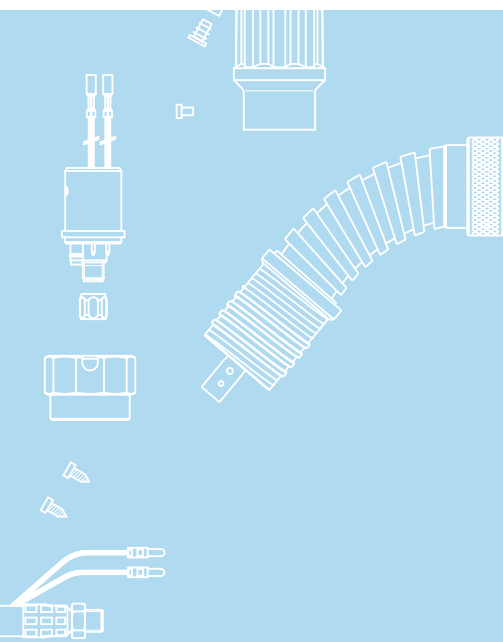




Classic TBi 351 E1



Water cooled

Very compact and ergonomic

Screw-on fume shroud

Technical data

MIG/MAG semi-automatic fume extraction welding torch TBi 351 E1

Rating at 100% duty cycle
(10 min. cycle)

- Mixed gas: 280 A
- CO₂: 320 A

Cooling method water cooling

Wire diameter 0.8 - 1.2 mm

Gas flow 14 l/min

Technical specification according to IEC 60974-7

Weight with 1.5m cable 1.60 kg

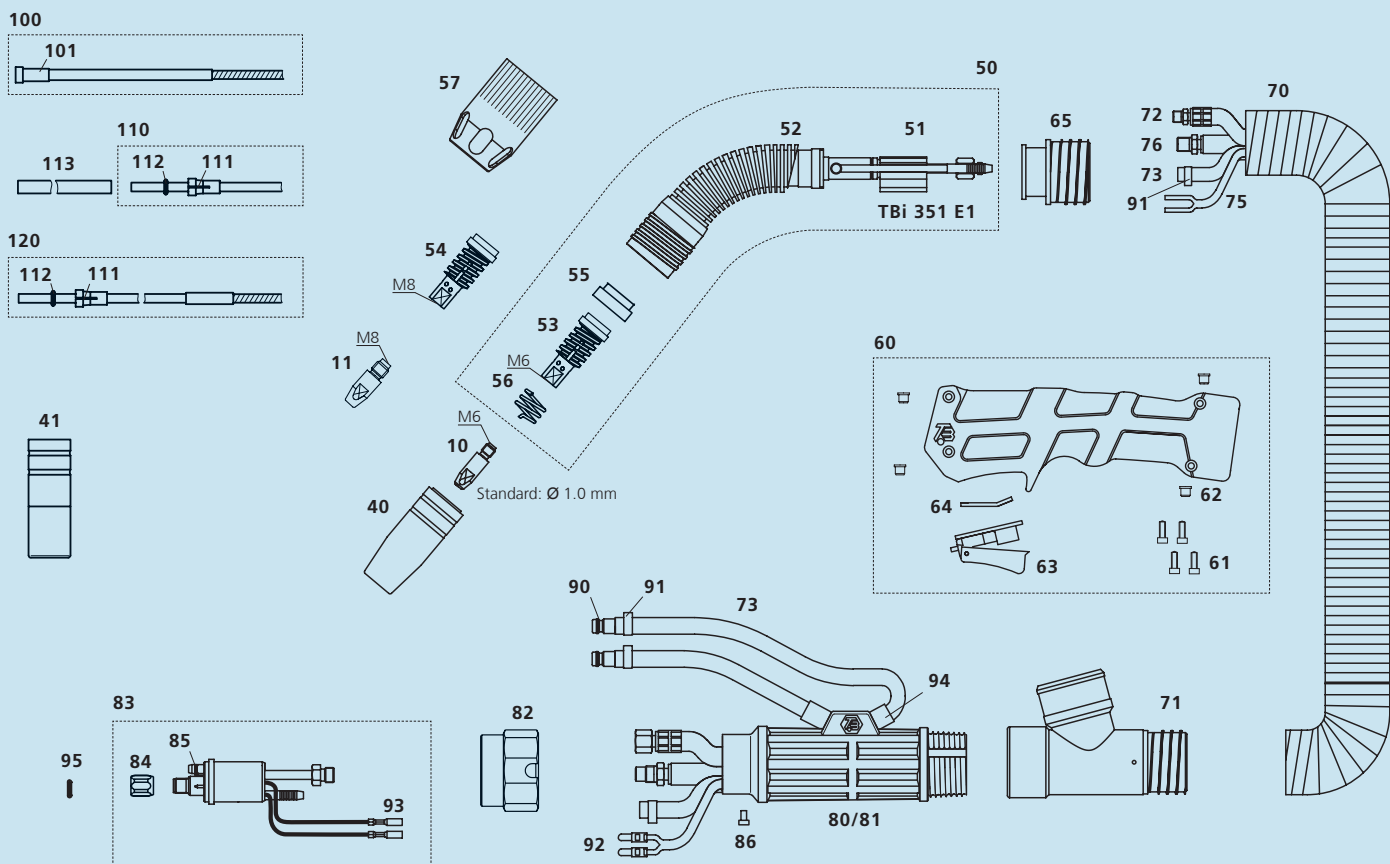
Connection Euro-Central connector,
other connectors (e.g. CLOOS®, ESAB®,
Lincoln®) available upon request.

Torch rating will be reduced when using pulsed-arc power sources.
Custom lengths of the cable assembly are available upon request.

Ordering Information

TBi 351 E1 ESW, 50° bent *upon request*

* At the blank, please insert 3, 4 or 5 for a torch length of 3, 4 or 5 m.



Pos.	Description	Part. No.	Pos.	Description	Part. No.
Contact tips					
▶ 10	Contact tip M6x28, Ecu	340P_1069*	70	Fume extraction hose D=38 mm	306P384600
10	Contact tip M6x28, CuCrZr	340P_3069*	71	T-joint cpl. for 38 mm fume hose	200P101012
10	Contact tip M6x28 Alu, Ecu	341P_1069*	72	Water-power cable Classic, blue, 2-C	316P1621_0*
11	Contact tip M8x30, Ecu	340P_1262*	73	PVC hose, braided, black, 5x1.5 mm	302P020000
11	Contact tip M8x30, CuCrZr	340P_3262*	75	Control cable x.10m, round, cpl., for Tbi E1/E2/E3	301P2304_1*
11	Contact tip M8x30 Alu, Ecu	341P_1262*	76	Wire conduit yellow ,Classic'	356P0401_0*
Gas nozzles					
▶ 40	Nozzle con. diam. 15.0 mm	345P012003	80	Cable support housing (only with pos. 81)	701P102070
40	Nozzle con. diam. 15.0 mm long insul.	345P012303	81	Cable support cover (only with pos. 80)	701P102071
41	Nozzle cyl. diam. 20.0 mm	345P011003	82	Adaptor nut	701P001013
41	Nozzle cyl. diam. 20.0 mm long insul.	345P011303	83	Central adaptor ESW cpl., Tbi 351 E1	701P101011
Spare parts					
50	Torch neck Tbi 351 E1, cpl.	272P101001	84	Sleeve nut M10x1	701P002005
51	Inner tube Tbi 351 E1	272P101002	85	O-ring 4.0x1.0 mm (gas nipple)	365P100040
52	Outer tube Tbi 351 E1	272P101003	86	Slotted screw M4x6	100P008401
53	Nozzle support Tbi 351 E1 / 252 E1 DR, M6	272P102003	90	Quick connector	701P002064
54	Nozzle support Tbi 351 E1 / 252 E1 DR, M8	272P102008	91	Hose clamp Ø 9.5 with ring	373P100095
55	Insulator Tbi 252 E1	254P102005	92	Insulated connector, male, round	375P000004
56	Nozzle spring Tbi 250/252/351	103P002006	93	Insulated connector, female, round	375P000003
57	Fume shroud Tbi 351 E1	272P102010	94	Rubber hose 10x2.0 mm	310P102102
60	Handle cpl., blue, micro switch, Tbi E1	380P916001	Wire guides		
61	Socket cap screw M4x10	109P091204	100	Liner w/ insulation blue (x.40 m) for wire 0.8-1.0	324P1545_4*
62	Threaded bush M4	252P102016	▶ 100	Liner w/ insulation red (x.40 m) for wire 1.0-1.2	324P2045_4*
63	Micro switch, red, 3 poles	385P033011	101	Collet for liners dia. 4.5 mm	330P025045
64	Sealing plate for handle Tbi E1	252P102017	110	Teflon liner blue (x.50 m) for wire 0.8-1.0	326P1540_5*
-	Gasket for handle Tbi E1	252P102015	110	Teflon liner red (x.50 m) for wire 1.0-1.2	326P2040_5*
65	Handle fitting for 38 mm fume hose	274P102011	111	Collet for teflon and PA liner 4.0 mm	331P020040
			112	O-ring 3.50x1.50 mm (teflon liner)	365P150035
			113	Support tube 5x4.4 mm, L=150 mm	329P544150
			120	PA-Alu wire guide (x.50 m) for wire 1.0-1.2	328P2040_A*

▶ = Standard equipment

* At the blank, please insert suitable information for torch length or wire diameter, e.g. 08 for 0.8 mm or 3 for 3 mm.

© 2009 Tbi Industries GmbH. All rights reserved. Subject to change without notice. Warranty only when using original Tbi consumables and spare parts. Excerpts and reprints not permitted. Nr. DOKP113142, 07/2009.