



**Tbi Industries**

***Tbi XCT 400W***

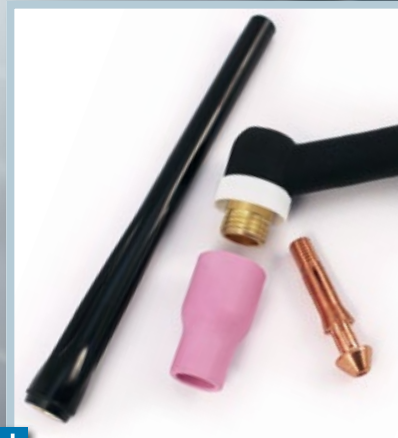


***The new Top Class for higher performance and ergonomics***



*We made it:  
The performance of the  
TBi SR 400 with dimensions  
similar to the TBi SR 20.*

*Equipped with the new  
TBi PrecisionSwitch. Precise  
operation with optimized  
ergonomics.*



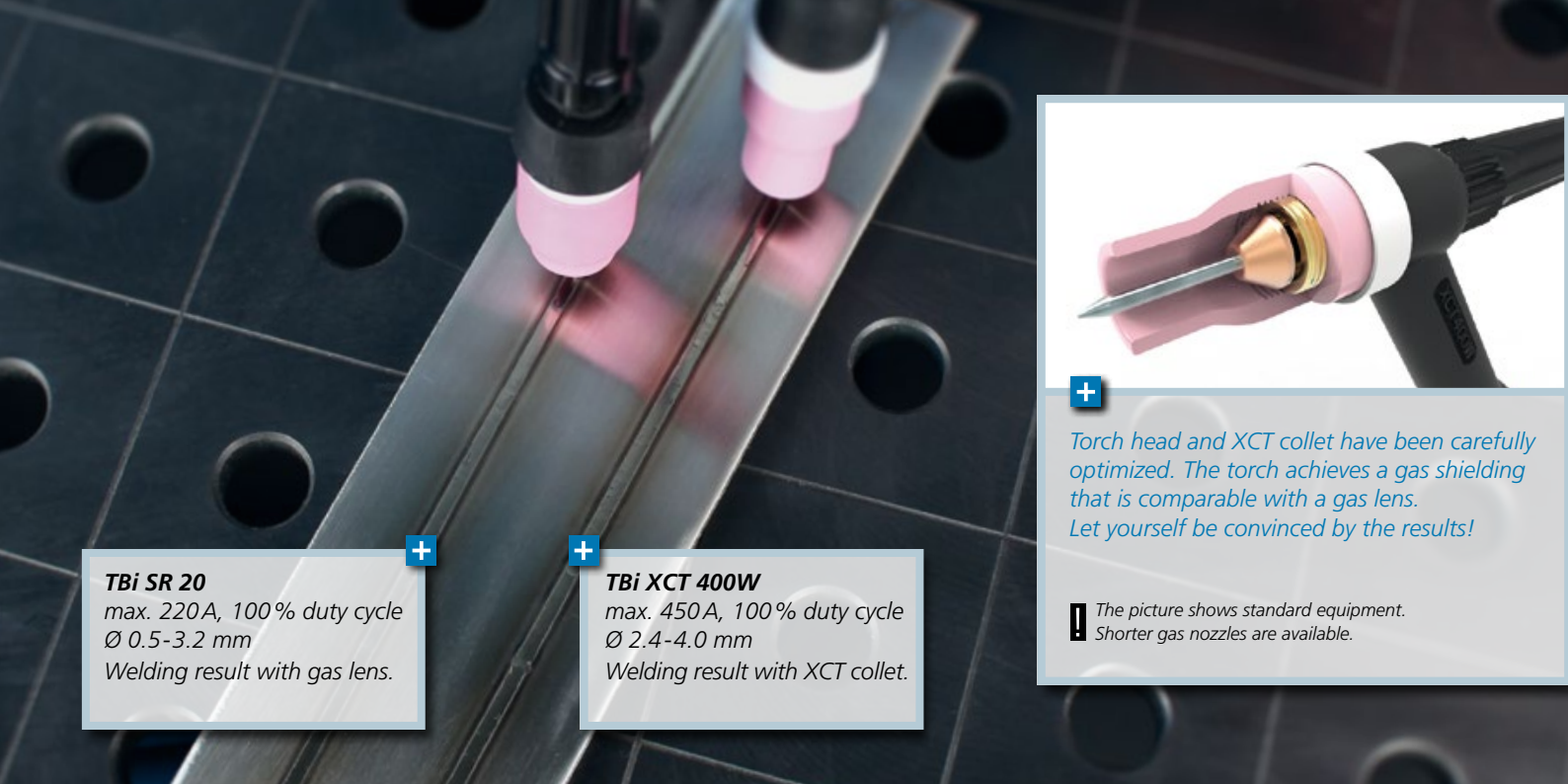
*The newly developed collet  
replaces the conventional parts.  
Stays constantly reliable even  
under high load.*

*New cable support for reliable operation and long life time.*



***Now available  
at your specialized TBi distributor***

*If you don't know where your nearest TBi distributor is located, please give us a call:  
Tel. +49 6404 9171-0*



**TBi SR 20**

max. 220A, 100% duty cycle  
Ø 0.5-3.2 mm  
Welding result with gas lens.



**TBi XCT 400W**

max. 450A, 100% duty cycle  
Ø 2.4-4.0 mm  
Welding result with XCT collet.



*Torch head and XCT collet have been carefully optimized. The torch achieves a gas shielding that is comparable with a gas lens. Let yourself be convinced by the results!*

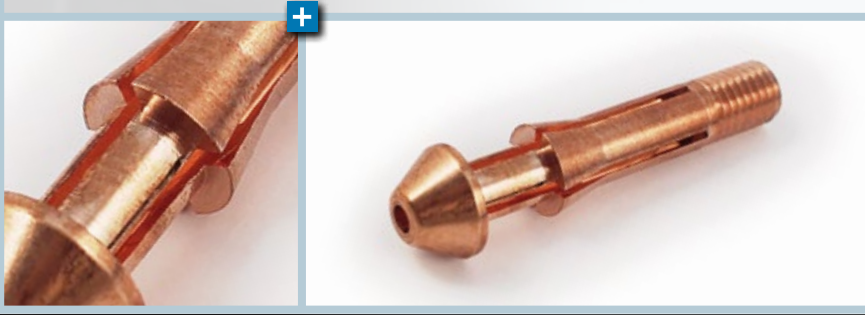


*The picture shows standard equipment. Shorter gas nozzles are available.*



*The TBi XCT collet creates a large area of contact between the electrode and the water-cooled torch head. This ensures an exceptionally efficient transfer of current and heat.*

**!** *XCT stands for Extra Cool Tungsten, thus for an exceptional well cooled tungsten electrode.*



*Say good-bye to short-lived consumables!*

*Switch to the TBi XCT 400W now – 1 torch for practically all applications.*

# You can rely on the TBi Expert-knowledge also for our other products!

## TIG



## Robotic



## MIG / MAG

