



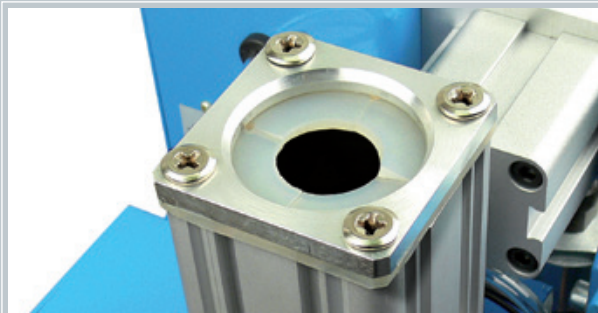
## TBi BRG-2 Torch cleaning stations

Automatic torch cleaning stations  
for robot torches

Spatter is removed by rotating reamer

Sprays torch with anti-spatter fluid

Cuts off the wire end



The new torch cleaning station TBi BRG-2-ES is equipped with an enclosed spraying unit. The anti-spatter fluid is applied to the torch head in a controlled way. The robot cell will not be contaminated and less anti-spatter fluid is used.

### Technical Data

#### Automatic torch cleaning station

Function	pneumatic
Air supply	oil-free compressed air, 6 bar
Control signal	24 V DC
Cleaning cycle	approx. 4 - 5 sec.
Anti-spatter fluid dosage	adjustable
Anti-spatter fluid container	500 ml
Wire cutting performance	max. 1.6 mm steel wire
Weight	approx. 14 kg (without pedestal)

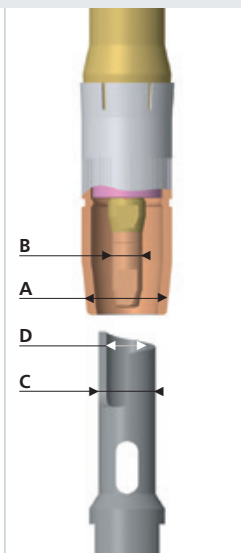
## Comparison of the different models

	BRG-2-VD Special version	BRG-2-VD-DAE	BRG-2-VD-DAS	BRG-2-ES Special version	BRG-2-ES-DAE	BRG-2-ESS-DAS	BRG-2-ES-DAE Special version	BRG-2-ES-DAE Special version	BRG-2-ES-DAE-TD for Tandem torches TBi TD 20/22F10-V2
Part no.	531P101041	531P101044	531P101057	531P101048	531P101046	531P101047	531P101066	531P101065	531P101062
Cleaning cycle electrically activated	✓	✓	✓	✓	✓	✓	✓	✓	✓
Spraying in cleaning position (open system)	✓	✓	✓						
Spraying in separate unit (enclosed system)				✓	✓	✓	✓	✓	✓
Spraying electrically activated				✓	✓		✓	✓	✓
Spraying automatically activated	✓	✓	✓			✓			
Wire cutting electrically activated	without wire cutter	✓		without wire cutter	✓		✓	✓	✓
Wire cutting automatically activated	without wire cutter		✓	without wire cutter		✓			
Signal: nozzle clamp open	✓	✓	✓	✓	✓	✓	✓	✓	✓
Signal: reamer in upper position	optional	optional	optional					✓	optional
Signal: reamer in lower position	optional	optional	optional				✓	✓	optional
TCP reference point available	✓	✓	✓	✓	✓	✓	✓	✓	✓
Delivery time	by arrangement	Standard	by arrangement	by arrangement	Standard	by arrangement	by arrangement	by arrangement	by arrangement

Different configurations and additional function available on request.

## Cleaning reamers for gas nozzles

A	B	C	D	
Gas nozzle NW [mm]	Contact tip OD [mm]	Reamer OD [mm]	Reamer ID [mm]	Part no.
13.0	6.0	12.0	7.0	531P102010
13.0	8.0	12.5	9.0	531P102006
14.0	8.0	13.0	9.0	531P102007
15.0	8.0	14.0	9.0	531P102012
▶ 16.0	8.0	15.0	9.0	531P102014
▶ 16.0	10.0	15.0	11.0	<b>531P102015</b>
17.0	10.0	16.0	11.0	531P102017
18.0	10.0	17.0	11.0	531P102020
18.0	10.0	17.0	13.0	531P102021
19.0	10.0	18.0	11.0	531P102016
20.0	10.0	19.0	11.0	531P102029
Cleaning reamer for TBi TD 20/22F10-V2				531P102015



▶ = Standard size reamer, included with the unit.

Reamer size must be chosen according to contact tip and nozzle used. The inner diameter of the reamer should be 1mm larger than the outer diameter of the tip. The outer diameter of the reamer should be 1mm smaller than the inner diameter of the nozzle. Additional reamers optimized for use with the TBi RoboMIG RM2 torches are listed in our TBi RM2 catalog.

## Accessories

