

■ Torch model
■ Order quantity
■ Remarks
■ Handle and trigger

- Handle TBI Precision** (not available for V-Version)
 - Double function switch (style depends on torch model)
 - Double function switch with poti, 10 kΩ
 - Dual levers (up/down)

- Handle tube with rubber sleeve**
 - Switch, flat top
 - Switch, round top
 - Double switch
 - Micro switch (no rubber sleeve)

■ Cable assembly

- 4 m
- 8 m
- Custom length _____ m

■ Outer cover

- Rubberhose, high voltage resistant up to 10 kV (std.)

Option, not high voltage resistant

- Leather hose (0.60 m) / Rubber hose
- Leather hose (0.60 m) / Textil hose
- Textil hose (full length)

■ Power source

 Manufacturer / Model

■ Control cable plug

- 3-pole Tichel plug
- 5-pole Tichel plug
- 4-pole Amphenol plug
- 6-pole Hartings plug
- 7-pole Round plug
- _____

Option

- Control cable, w/o shield

 Button 1 on

1	2	3	4	5	6	A	B	C	D
---	---	---	---	---	---	---	---	---	---

 Button 2 on

1	2	3	4	5	6	A	B	C	D
---	---	---	---	---	---	---	---	---	---

 Bridge on

1	2	3	4	5	6	A	B	C	D
---	---	---	---	---	---	---	---	---	---

 Poti on

1	2	3	4	5	6	A	B	C	D
(+ / - / Slider)									

■ Machine side connection
Air cooled
A. Mono cable

- M12x1
- G1/4" *
- G3/8" *

B. 2-pc. cable

- Power
- 10/25 (9 mm)
- 35/50 (13 mm)

- Gas
- G1/4"
- _____

C. TSB with gas connection

- Power
- 10/25 (9 mm)

- Gas
- G1/4"
- _____

D. TSB with gas connection

- Power
- 35/50 (13 mm)

- Gas
- G1/4"
- _____

E. Central connector

- TCG suitable for
- Lorch
- Merkle
- SAF/Oerlikon
- Fronius
- Dalex

F. Central connector

- suitable for ESAB (E/M) - please indicate connection -
- Euro GZ
- Euro W5G

Water cooled
G. Individual connection

- | Power/water | Water | Gas |
|----------------------------------|--------------------------------|--------------------------------|
| <input type="checkbox"/> M12x1 | <input type="checkbox"/> G3/8" | <input type="checkbox"/> G1/4" |
| <input type="checkbox"/> G1/4" * | <input type="checkbox"/> _____ | <input type="checkbox"/> _____ |
| <input type="checkbox"/> G3/8" * | | |

H. TSB with individual connection

- | Water (2x) | Gas |
|---|--------------------------------|
| <input type="checkbox"/> Quick connector (9 mm) | <input type="checkbox"/> G1/4" |
| <input type="checkbox"/> _____ | <input type="checkbox"/> _____ |

I. Central connector

- TCG suitable for
- Lorch
- Merkle
- SAF/Oerlikon
- Fronius
- Dalex

J. Central connector

- TCG suitable for
- Kemppi MLS

K. Central connector

- suitable for ESAB (E/M) - please indicate connection -
- Euro WZ-0
- Euro W5W

* with adapter

■ Your order details

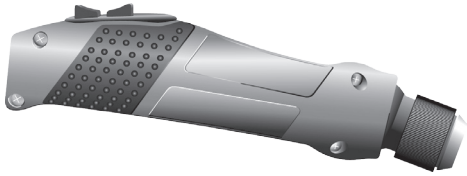
 Date

 Name / Signature

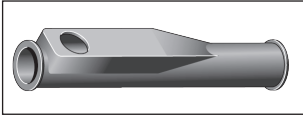
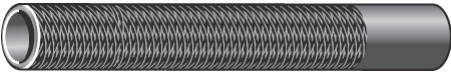
 Company / Stamp

Please note: Custom-built torches cannot be returned!

Handle TBi Precision



Handle tube with rubber sleeve



Control cable plug

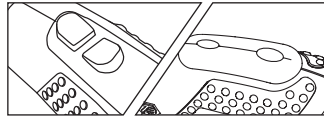


3-, 5-pole Tuchel plug

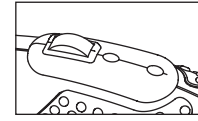


4-pole Amphenol plug

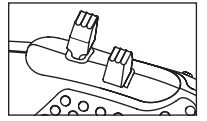
TBi Switch modules



Double function switch (style depends on torch model)

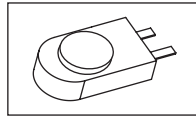


Double function switch with poti, 10 kΩ

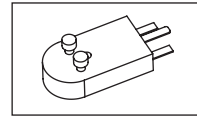


Dual levers (up/down)

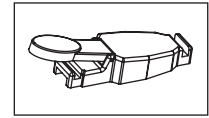
TBi Switches



Switch, flat top (round: w/o illus.)



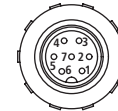
Double function switch



Micro switch (no rubber sleeve)



6-pole Harting plug



7-pole round plug (suitable for Rehms, Migatronics)

Machine side connections

gas cooled

A		M12x1 ; G1/4" * ; G3/8" *
B		TSB 10/25 (9 mm) TSB 35/50 (13 mm) G1/4", Gas
C		TSB 10/25 Mono (9 mm) G1/4", Gas
D		TSB 35/50 Mono (13 mm) G1/4", Gas
E		suitable for Lorch, Merkle, SAF/ Oerlikon, Fronius, Dalex Gas
F		suitable for ESAB (E/M) Euro-GZ Euro-W5G

water cooled

G		G1/4" G3/8" M12x1 ; G1/4" * ; G3/8" *
H		TSB 35/50 (13 mm) G3/8" G1/4" Water Gas
I		suitable for Lorch, Merkle, SAF/ Oerlikon, Fronius, Dalex Water Gas
J		suitable for Kemppi MLS Water Gas
K		suitable for ESAB (E/M) Euro-WZ-0 Euro-W5W

* with adapter